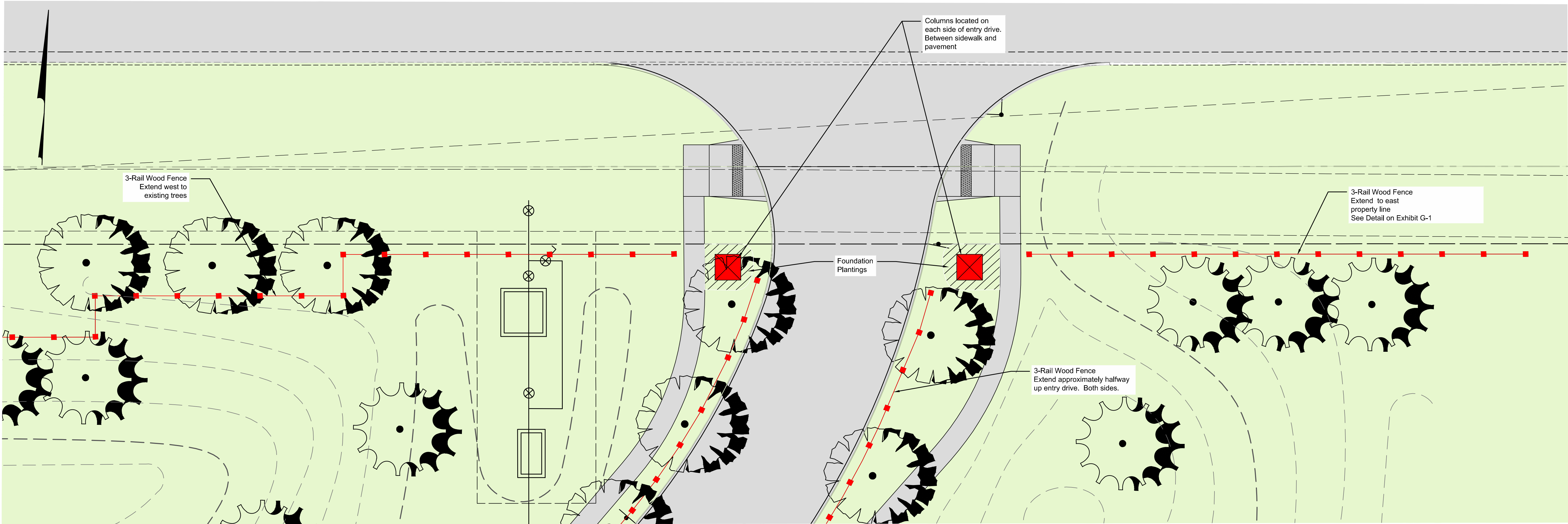


Z:\2020\326\Drawings\04\Sheets\Final Development Plan\G-2 Entry Enlargement.dwg, Last Saved By: jlooby, 11/12/2021 3:03 PM



Grove entry looking south

One Column sign shall be located on each side of the entry for a total of 2 signs.



Entry Sign

Sign Area: 62" high x 9" wide = 3.76 sf of sign area.  
See LED lighting specification on Exhibit G-2.

EXHIBIT "G-3"

DATE:	SEPTEMBER 22, 2021
REVISED:	
REVISED:	NOVEMBER 15, 2021
REVISED:	
REVISED:	
REVISED:	
REVISED:	

PREPARED BY:

**EMHIT**

EVANS, MECHWART, HAMBLETON & THOR, INC.  
Engineers • Surveyors • Planners • Scientists  
Phone: 614.775.6200 Fax: 614.775.3418  
emhit.com

PREPARED FOR:

**ROMANELLI & HUGHES**

148 WEST SCHROCK ROAD  
WESTERVILLE, OHIO 43081

ENTRY  
ENLARGEMENT

**THE GROVE**

FARM LOT 13, QUARTER TOWNSHIP 2, TOWNSHIP 3, RANGE 17  
UNITED STATES MILITARY DISTRICT  
TOWNSHIP OF GENOA, COUNTY OF DELAWARE, STATE OF OHIO