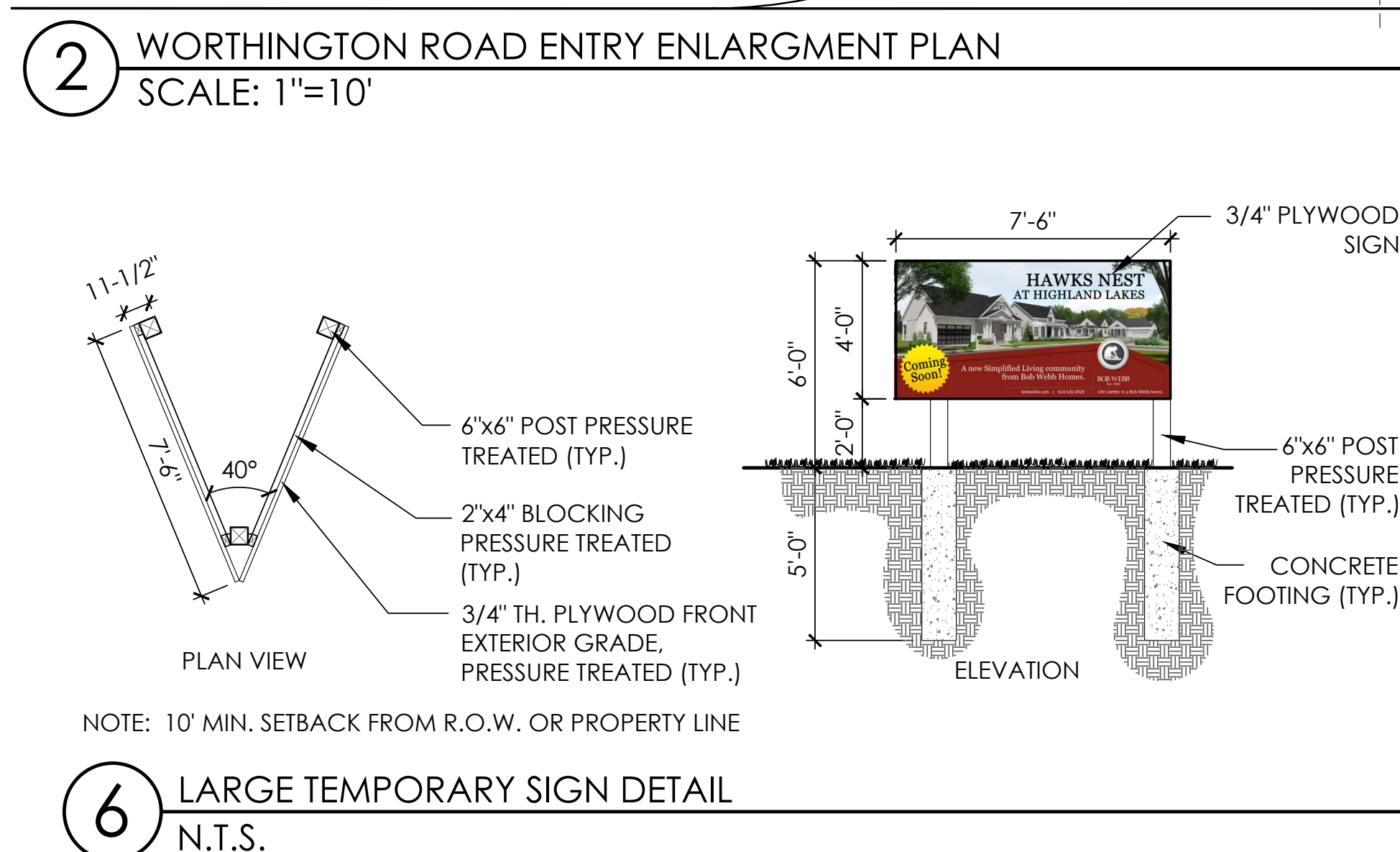


- CONSTRUCTION NOTES:

- 1 LAWN AREA, PROVIDE POSITIVE DRAINAGE ACROSS ALL SURFACES.
- 2 LANDSCAPE AREA, PROVIDE POSITIVE DRAINAGE ACROSS ALL SURFACES.
- 3 BENCH, BENCH 93 OR OWNER APPROVED EQUAL, WHITE, AVAILABLE FROM DUMOR SITE FURNISHINGS. [WWW.DUMOR.COM](http://WWW.DUMOR.COM), 1-800-598-4018. SEE DETAIL 5 ON EXHIBIT D-2 FOR MORE INFORMATION.
- 4 FREESTANDING DRY LAID STONE WALL. SEE DETAIL 4, EXHIBIT D-2 FOR MORE INFORMATION.
- 5 NOT USED THIS SHEET
- 6 TYPICAL FREESTANDING COLUMN. SEE DETAIL 1 EXHIBIT D-2 FOR MORE INFORMATION.
- 7 AERATOR-AUGUAIR ULTRA BY AQUAMASTER. MODEL 2S, STAINLESS ENCLOSURE. INSTALL PER MANUFACTURERS INSTRUCTIONS. [WWW.AQUAMASTERFOUNTAINS.COM](http://WWW.AQUAMASTERFOUNTAINS.COM)
- 8 LARGE TEMPORARY SIGN. SEE DETAIL 6 ON EXHIBIT D-2 FOR MORE INFORMATION

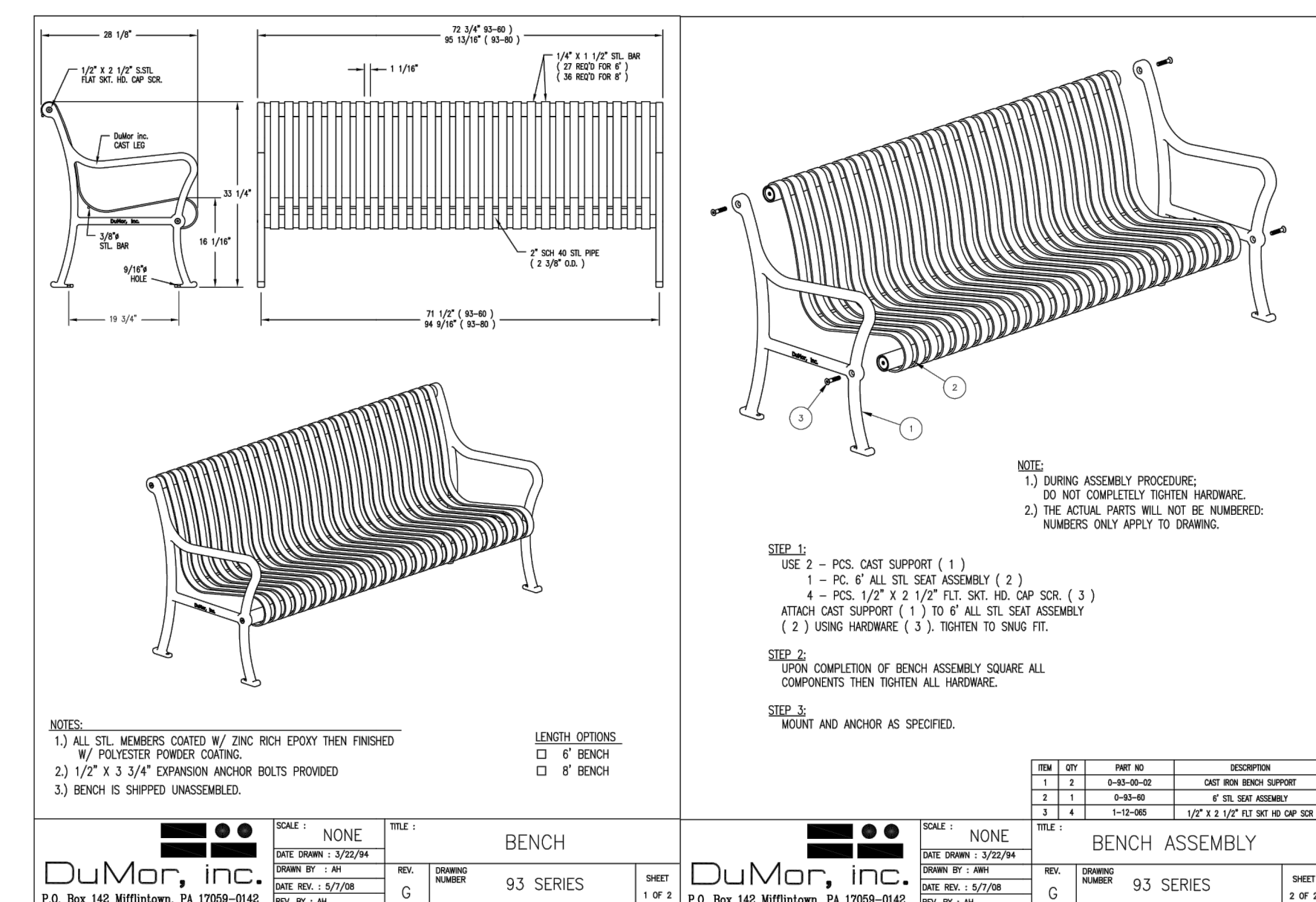


## PLANT LIST

(CONTRACTOR RESPONSIBLE FOR ALL PLANTS SHOWN ON PLAN)

QTY	KEY	BOTANICAL NAME	COMMON NAME	SIZE	COND.	REMARKS
TREES						
10	AME	AMELANCHIER CANADENSIS 'GLENN FORM'	RAINBOW PILLAR SERVICEBERRY	2.5" CAL.	B&B	MULTI-STEM, MATCH FOR
1	PLA	PLATANUS ACERIFOLIA 'MORTON CIRCLE'	EXCLAMATION LONDON PLANE TREE	2.5" CAL.	B&B	
SHRUBS						
25	BGV	BUXUS 'GREEN VELVET'	GREEN VELVET BOXWOOD	24" HGT.	CONT	
6	HPL	HYDRANGEA PANICULATA 'LIMELIGHT'	LIMELIGHT HYDRANGEA	36" HGT.	B&B	
6	JSG	JUNIPERUS x PFITZERIANA 'SEA GREEN'	SEA GREEN JUNIPER	36" HGT.	B&B	
8	ROS	ROSA X 'RADIKO'	DOUBLE KNOCK OUT ROSE	24" HGT.	CONT	
16	SJL	SPIRAEA JAPONICA 'LITTLE PRINCESS'	LITTLE PRINCESS SPIREA	24" HGT.	CONT	
PERENNIALS/ORNAMENTAL GRASSES						
12	CAL	CALAMAGROSIS ACUTIFLORA 'KARL FOERSTER'	KARL FOERSTER FEATHER REED GRASS	NO. 2	CONT	
54	HEC	HEMEROCALLIS 'EARLYBIRD CARDINAL'	EARLYBIRD CARDINAL DAYLILY	NO. 1	CONT	
65	HEM	HEMEROCALLIS 'HAPPY RETURNS'	HAPPY RETURNS DAYLILY	NO. 1	CONT	
28	HEU	HEUCHERA 'SOUTHERN COMFORT'	SOUTHERN COMFORT HEUCHERA	NO. 1	CONT	
20	MIS	MISCANTHUS SINENSIS VARIEGATUS	VARIGATED JAPANESE SILVER GRASS	NO. 2	CONT	
34	NEP	NEPETA XFAASSENII 'WALKER'S LOW'	WALKER'S LOW CATMINT	NO. 1	CONT	
108	RUD	RUDBECKIA 'LITTLE GOLDSTAR'	LITTLE GOLDSTAR BLACK EYED SUSAN	NO. 1	CONT	

\*NOTE: ANNUALS TO BE PLANTED BY OWNER. NOT IN INITIAL LANDSCAPE COSTS.



# LANDSCAPE DETAILS

# HAWKS NEST AT HIGHLAND LAKES

## PREPARED FOR HAWKS NEST PREMIER LIVING

DATE: 6/13/18

## EXHIBIT D-2

# Faris Planning & Design

LAND PLANNING  LANDSCAPE ARCHITECTURE

243 N. 5th Street Suite 401 Columbus, OH 43215  
p (614) 487-1964 [www.farisplanninganddesign.com](http://www.farisplanninganddesign.com)