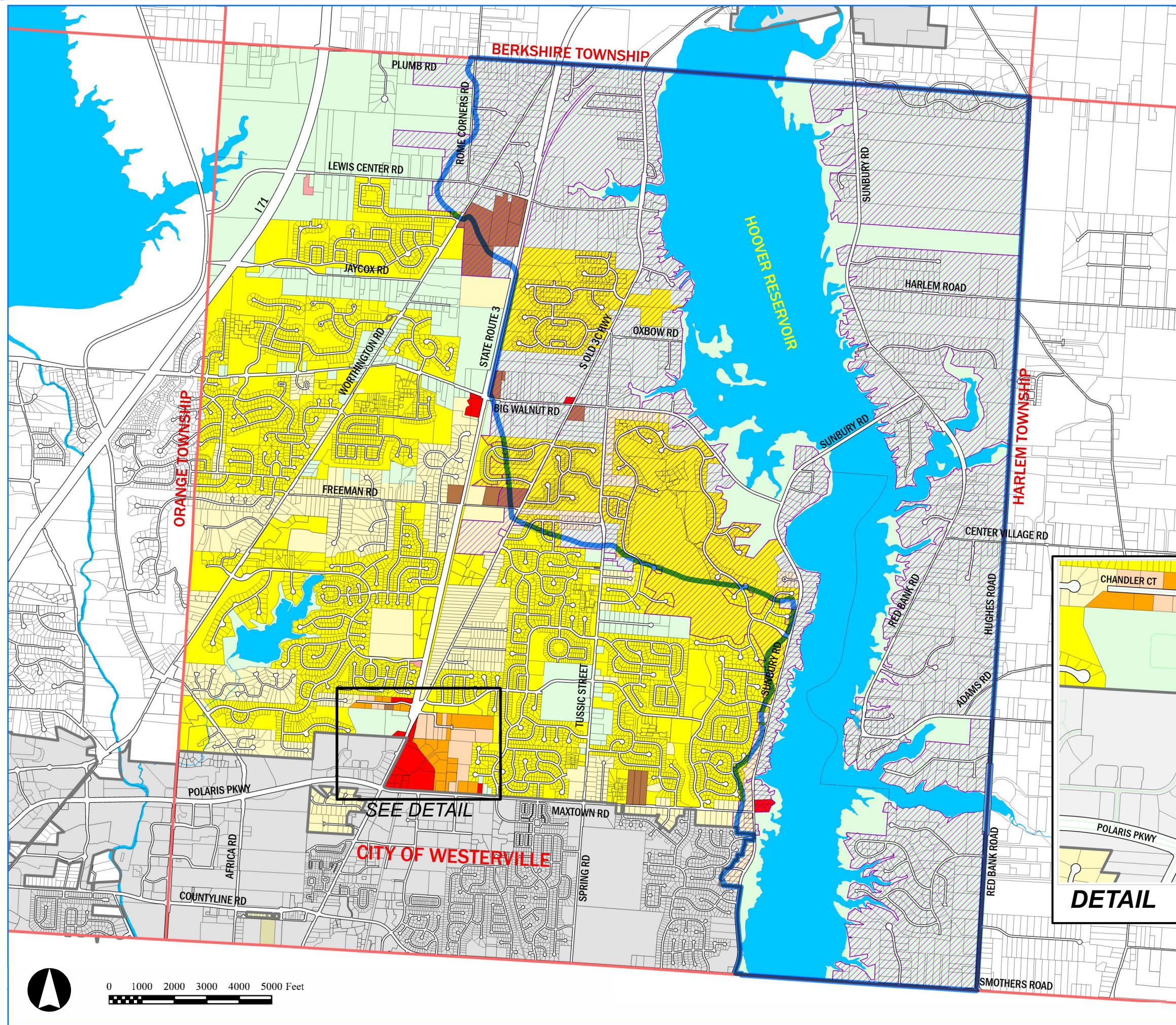


# Genoa Township Zoning Districts Map

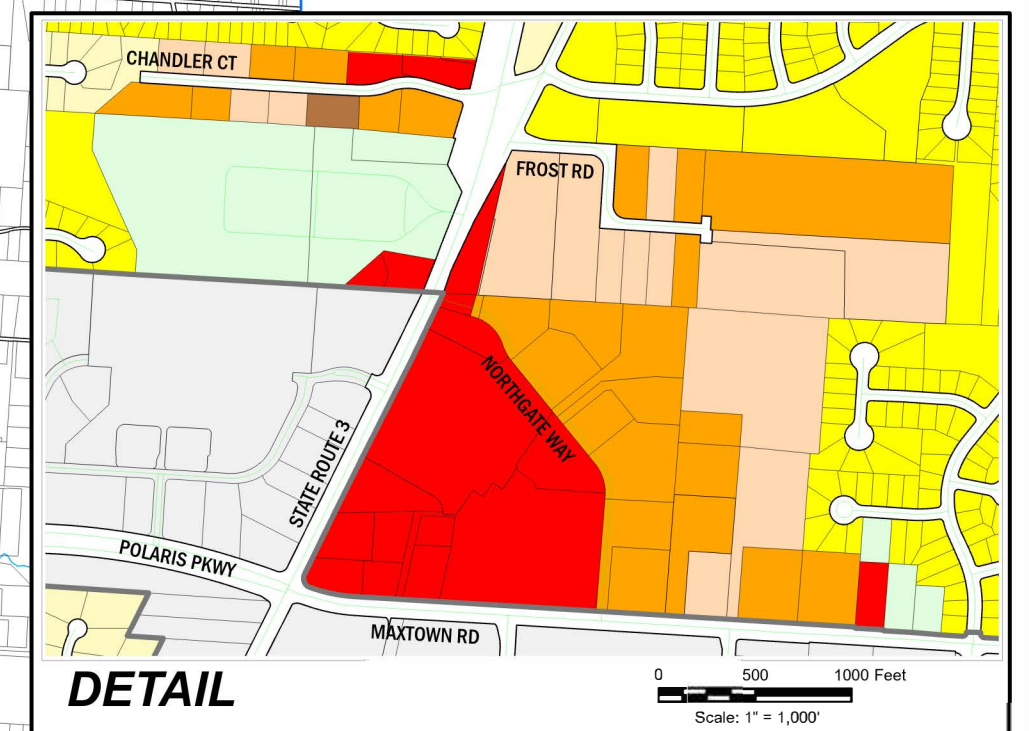
## Delaware County, Ohio

Effective October 31, 2020

**DRAFT September 2, 2021**  
**Trustees Draft - September 2, 2022**



- Hoover Reservoir Watershed
- Parcels within Hoover Watershed Overlay District
- Genoa Township Zoning**
- Rural Residential District (RR)
- Suburban Residential District (SR)
- Planned Residential District (PRD)
- Community Business (CB)
- Planned Commercial District (PCD)
- Planned Industrial District (PID)
- Planned Community Facilities District (PCF)
- Light Industrial District (LI) \*
- \* Eligible for Planned Industrial Zoning District



0 1000 2000 3000 4000 5000 Feet



Prepared By: Delaware County Regional Planning Commission (740-833-2260)  
www.dcrpc.org  
Parcel Information Provided by The Delaware County Auditor's Office  
Further Information is available by contacting the Auditor's GIS Office (740-833-2070)  
Zoning Information provided by Genoa Township (614-899-0725)

