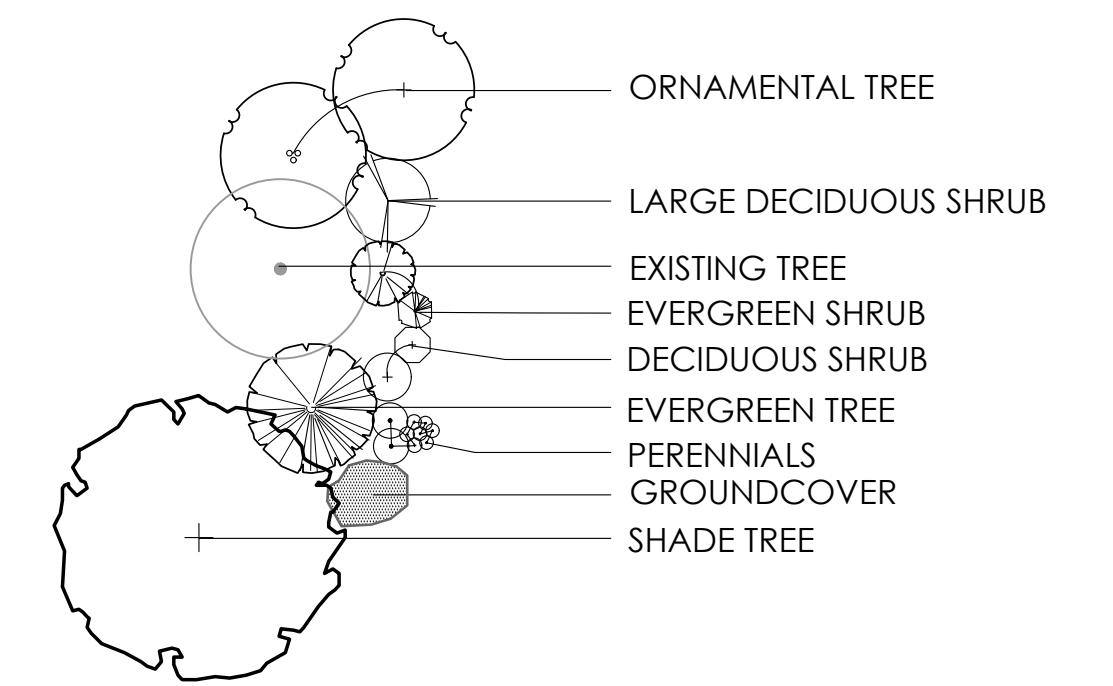


**CONSTRUCTION NOTES:**

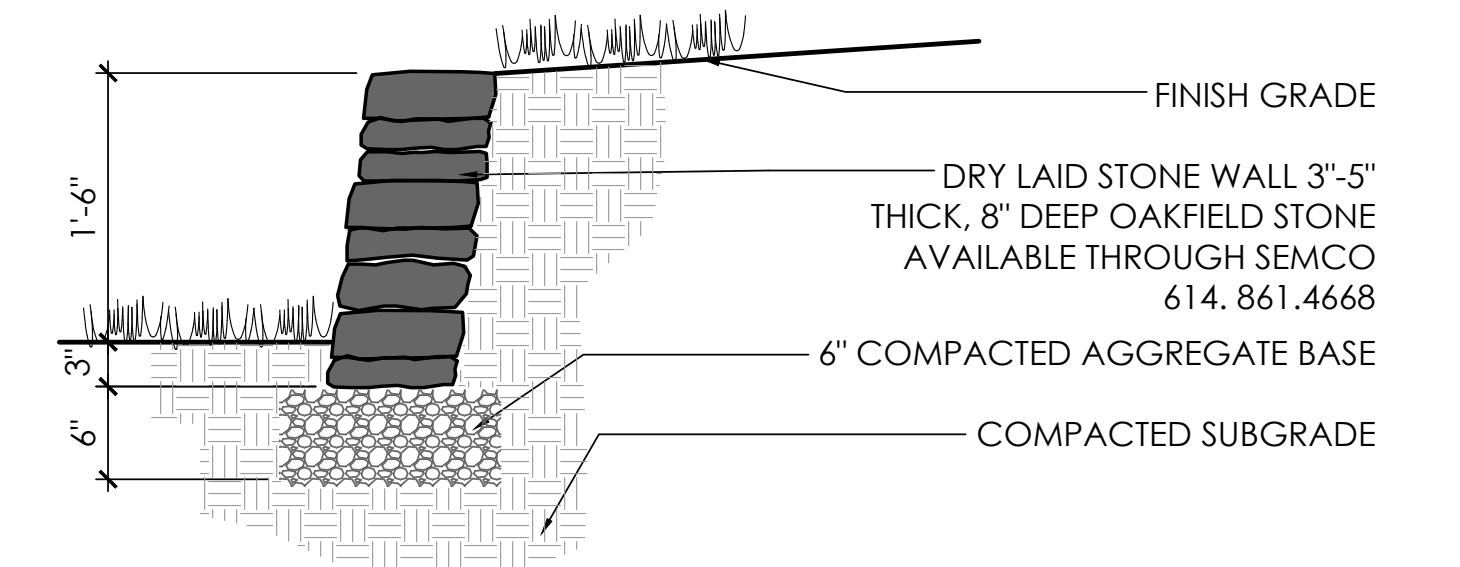
- ① LAWN AREA, PROVIDE POSITIVE DRAINAGE ACROSS ALL SURFACES.
- ② LANDSCAPE AREA, PROVIDE POSITIVE DRAINAGE ACROSS ALL SURFACES.

**PLANT KEY TYPICALS**

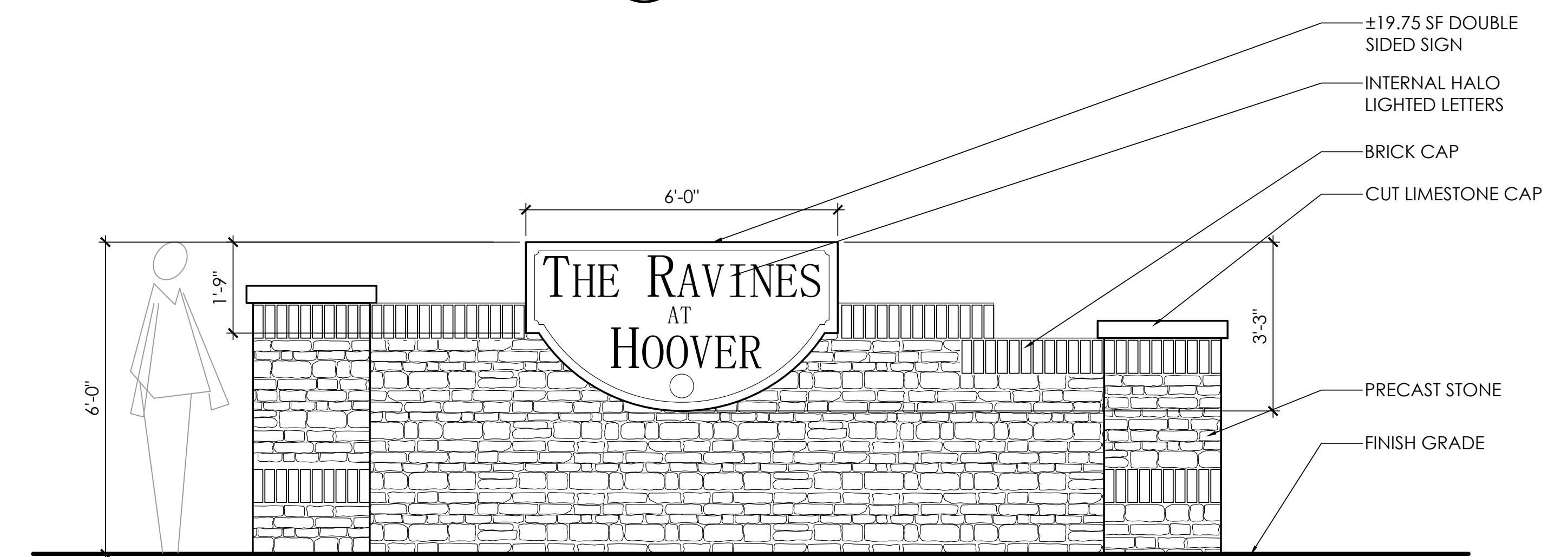
SEE PLANT LIST FOR SPECIFIC PLANT SPECIES



NOTE:  
PROVIDE 1" BATTER PER  
FOOT OF VERTICAL RISE



② DRY LAID STONE RETAINING WALL N.T.S. 04-2402d



NOTE: SIGN TO BE SETBACK 10' MIN FROM R.O.W.

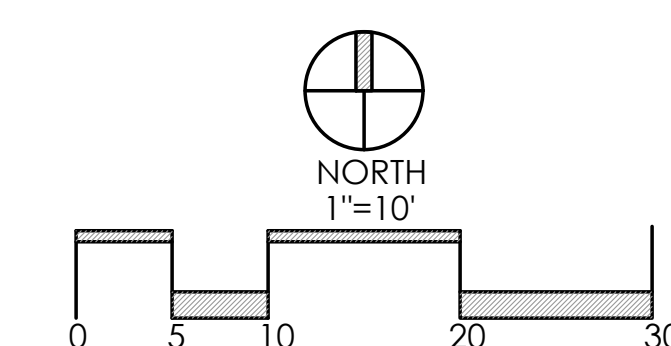
① ENTRY SIGN DETAIL SCALE: N.T.S.

**CONCEPT ENTRY ENLARGEMENT LANDSCAPE PLAN**

**EXHIBIT D-2**

**THE RAVINES AT HOOVER**

PREPARED FOR BENALCAZAR  
DATE: 3/23/18



**Faris Planning & Design**

LAND PLANNING g LANDSCAPE ARCHITECTURE  
243 N. 5th Street Suite 401 Columbus, OH 43215  
p (614) 487-1964 www.farisplanninganddesign.com