

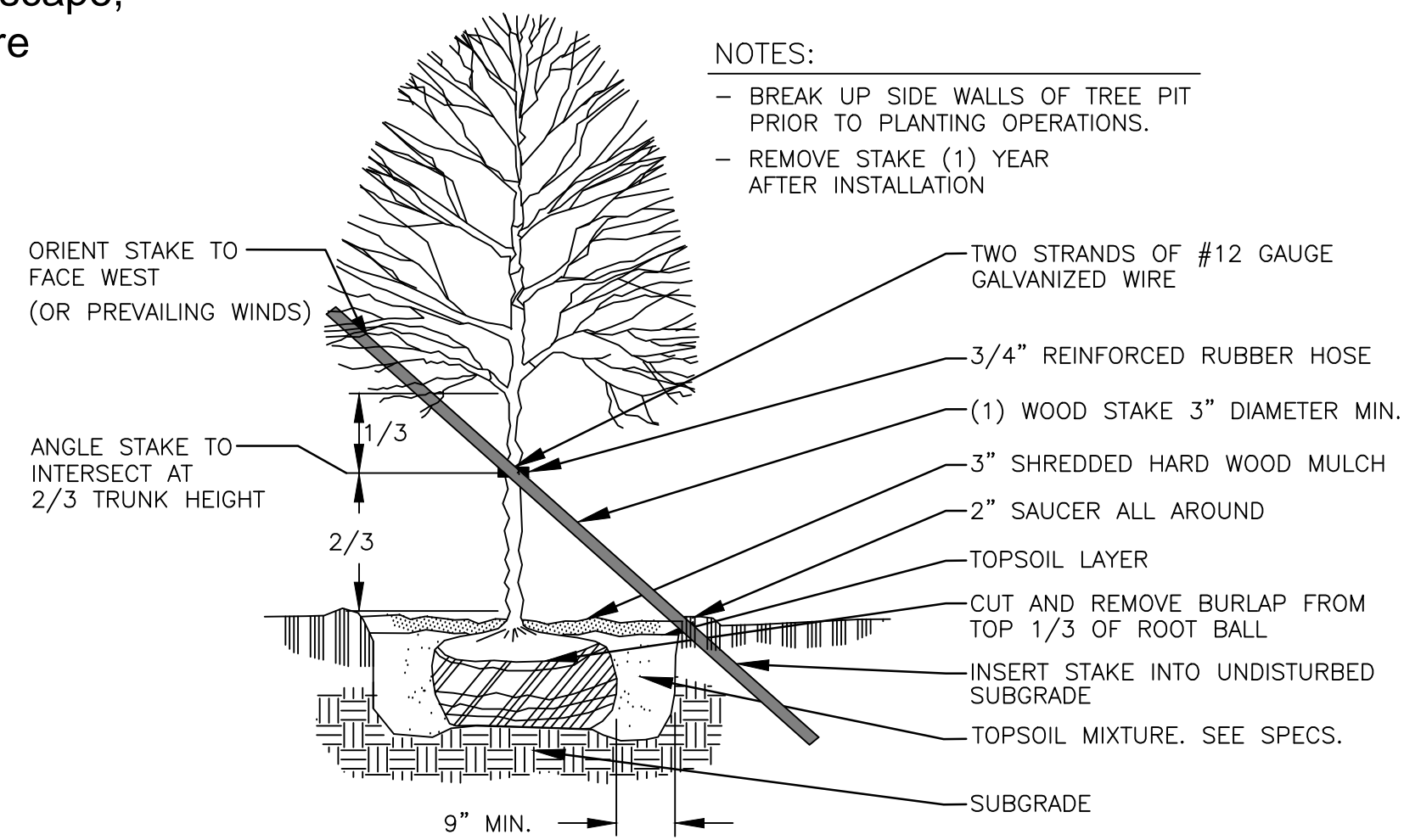
A Existing brick columns with 'Vinmar Village' plaque, landscape, and fence built in Section 1. No new signs or columns are proposed for this project.

STREET TREES: Located between the sidewalk and curb, typical spacing is one per lot, located on the lot line. Corner and pie-shaped lots may have more than one tree in order to achieve an evenly-spaced look. See Chart this sheet for tree types.

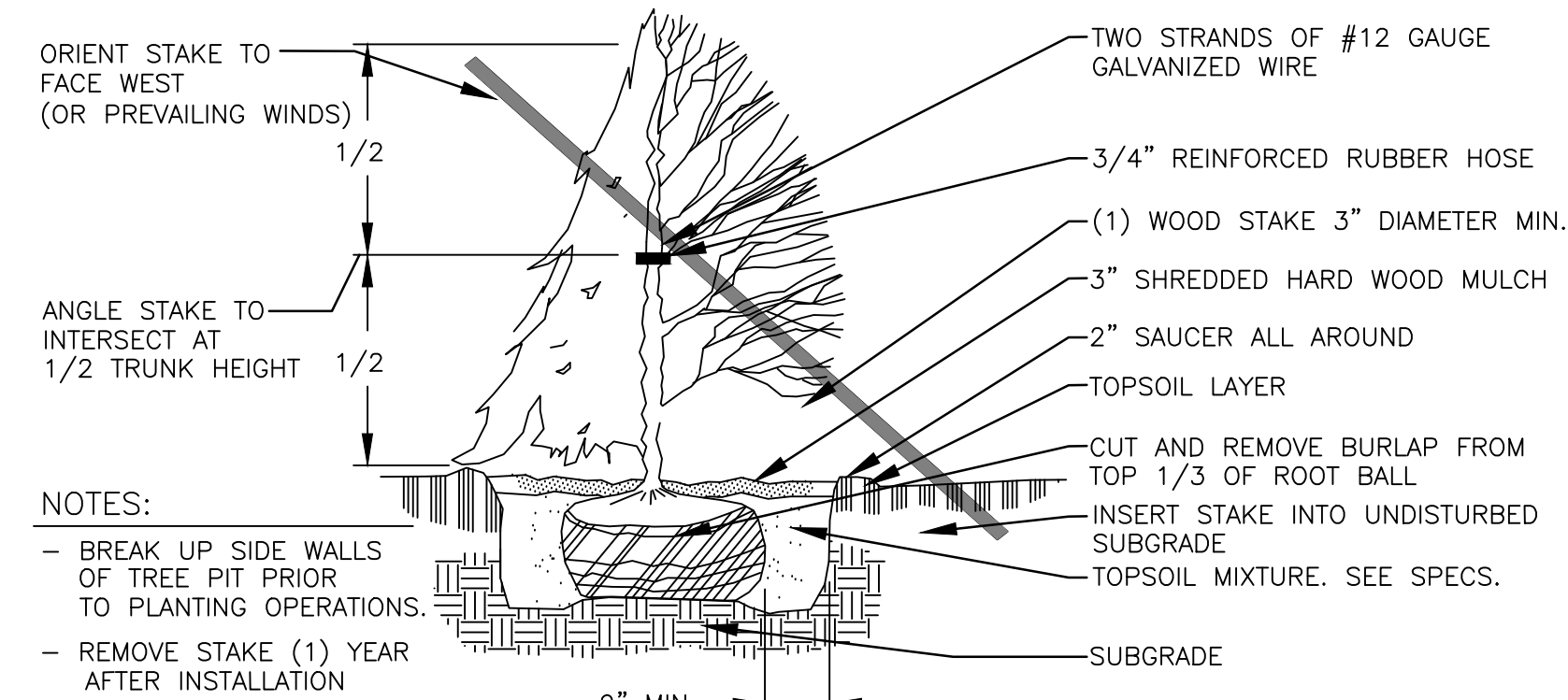
PARK TREES: Install ten, 2-inch caliber, deciduous shade trees in the west open space area. See Chart this sheet for tree types.

EVERGREEN TREES: Install six, six foot high, evergreen trees along the south property line. See Chart this sheet for tree types.

LIGHTING - Each home will have a pole-mounted coach light in the front yard. No street lights are proposed with this development.



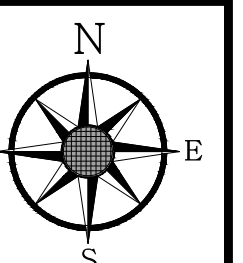
1 Tree Planting Detail



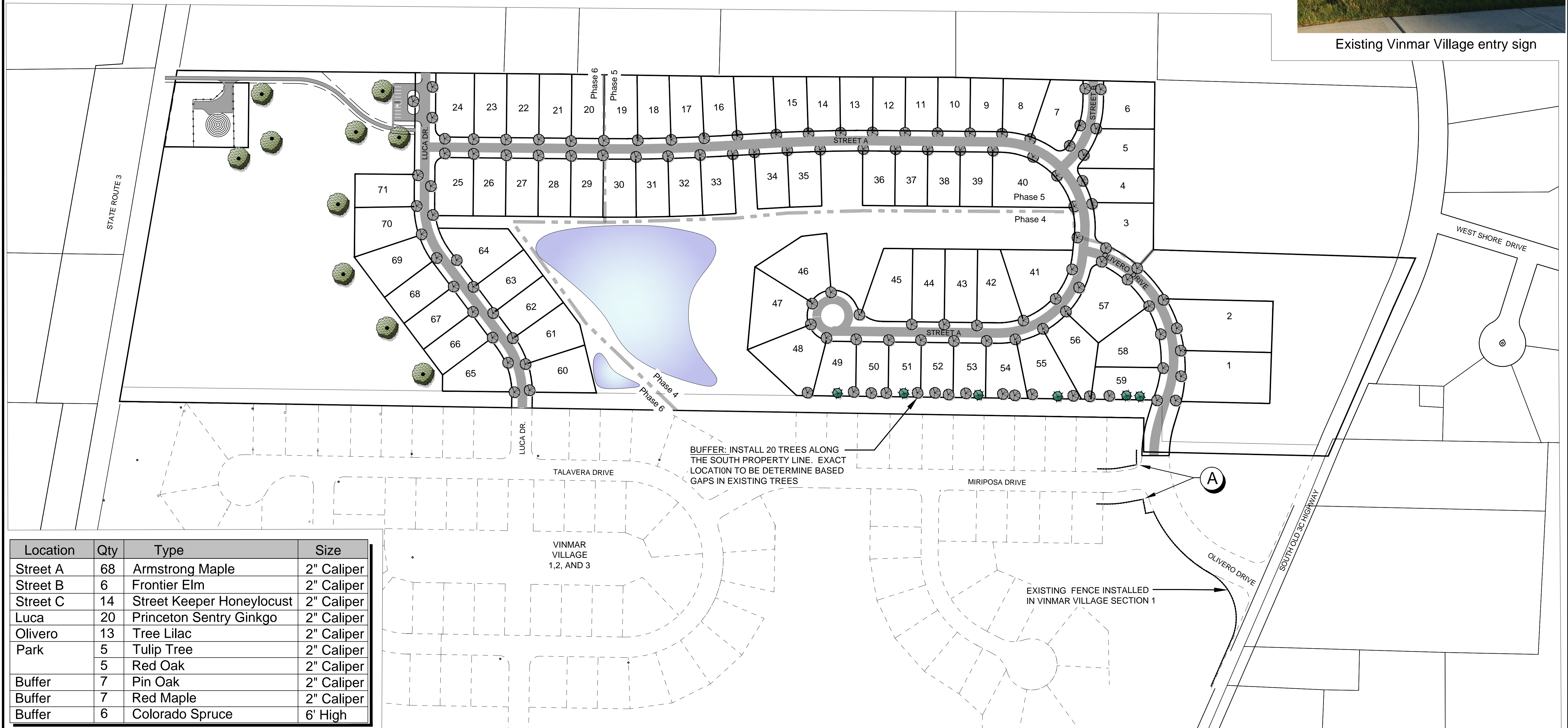
2 Evergreen Planting Detail



Existing Vinmar Village entry sign



0 150' 300'
December 8, 2017



Location	Qty	Type	Size
Street A	68	Armstrong Maple	2" Caliper
Street B	6	Frontier Elm	2" Caliper
Street C	14	Street Keeper Honeylocust	2" Caliper
Luca	20	Princeton Sentry Ginkgo	2" Caliper
Olivero	13	Tree Lilac	2" Caliper
Park	5	Tulip Tree	2" Caliper
	5	Red Oak	2" Caliper
Buffer	7	Pin Oak	2" Caliper
Buffer	7	Red Maple	2" Caliper
Buffer	6	Colorado Spruce	6' High

Open Space areas shall be seeded per ODOT 659 Class 1

VINMAR VILLAGE PHASES 4,5 and 6
 Genoa Township, Delaware County
 Preliminary Development Landscape Plan

u:\173409307\planning zoning\2017 12 8\2017 12 8 landscape.dwg